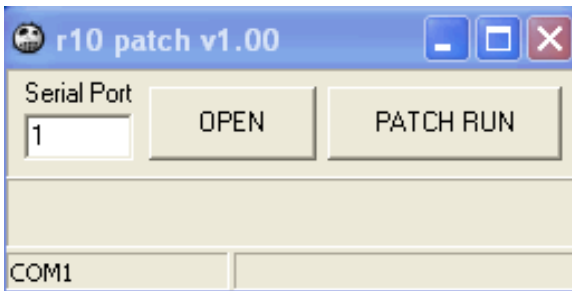


# Coolsat R-Link Loader "How To"

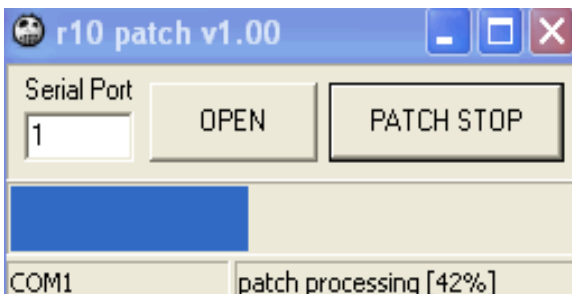
---

- 1) Download and extract the R-10 Loader Program.
- 2) Connect the straight cable (black with blue ends) between your computer and R-link.
- 3) Plug in the power supply and power the R-link (Automatic On)
- 4) Double click the R10-Patch-v\*\*\* file and the loader will start



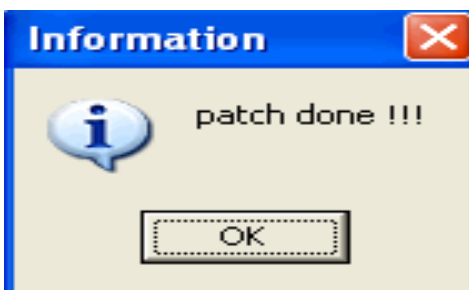
- 5) Type in your Serial Com Port number in the serial port box.
- 6) Click "Open" and then click on "Patch Run"

If you done it correctly, you will see the blue progress bar filling up and "patch processing percentage".



If your settings where incorrecct (Wrong Serial Port, Wrong Serial Cable or a Bad Connection) you will see "Patch Failed" - Restart the loader and try again.

Note: Most errors happen because of Wrong Serial Port setting.



- 7) Click OK and unplug the R-Link

8) Connect R-Link to your Coolsat Receiver using the (all Black) cross-over cable between R-Link and receiver.

9) Connect Ethernet cable and connect power supply. (The Red light between the power and Ethernet jacks will turn green when connect to the server)

10) Turn on Receiver and watch TV. (This is assuming you loaded the newest R-Link Receiver File already.. If not, you can do so now and then watch TV)

## **R-LINK - COMPLETE KIT**



1 R-Link

1 Power Supply

1 Crossover Cable

1 Straight Cable